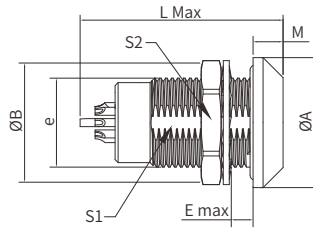


### ■ SWG Fixed Socket, Nut Fixing, Key(G), Watertight

- Connector series: SWG
  - Contact: Female
  - Key: G(More keys, refer to page 43)
  - Locking type: Self-locking
  - Orientation type: Straight
  - Part No.: SWG.XB.XXX.CLL
  - Mated with: PSG/PAG/PCG/PBG/MSG/PLG/PPG
- Note: "X" refers to part number definition on page 17



### ■ General Information



|                      |                          |
|----------------------|--------------------------|
| Ambient temperature: | -20°C ~ +80°C/100°C      |
| Endurance:           | >5000 cycles             |
| Insulator:           | PEEK                     |
| Connector contacts:  | Brass with gold plated   |
| Coupling nut/screw:  | Brass with nickel plated |

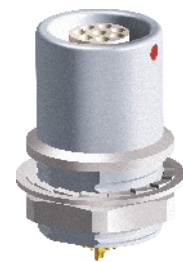
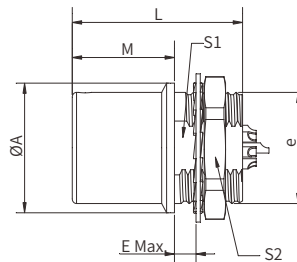
|                            |                            |
|----------------------------|----------------------------|
| Housing:                   | Brass with Cr plated       |
| Insulation resistance:     | ≥100MΩ                     |
| IP rating:                 | IP 50                      |
| Shielding efficiency:      | at 10MHz>75dB/at 1GHz>40dB |
| Salt spray corrosion test: | >144h                      |

| Size | Dimensions(mm) |      |         |      |      |     |      |    |
|------|----------------|------|---------|------|------|-----|------|----|
|      | A              | B    | e       | E    | L    | M   | S1   | S2 |
| 00   | 11             | 10.2 | M7*0.5  | 8.0  | 18.0 | 1.5 | 6.3  | 9  |
| 0B   | 13             | 12.4 | M9*0.6  | 7.0  | 24.5 | 4.8 | 8.2  | 11 |
| 1B   | 18             | 15.8 | M12*1.0 | 7.0  | 30.3 | 5.2 | 10.5 | 14 |
| 2B   | 22             | 19.2 | M15*1.0 | 8.0  | 35.6 | 6.0 | 13.5 | 17 |
| 3B   | 25             | 25   | M18*1.0 | 11.5 | 41.3 | 7.2 | 16.5 | 22 |

Note: Panel cut-out (page 164)

### ■ FFG Fixed Straight Socket, Key(G)

- Connector series: FFG
  - Contact: Female
  - Key: G(More keys, refer to page 43)
  - Locking type: Self-locking
  - Orientation type: Straight
  - Part No.: FFG.XB.XXX.CLL
  - Mated with: PSG/PAG/PCG/PBG/MSG/PLG/PPG
- Note: "X" refers to part number definition on page 17



### ■ General Information



|                      |                          |
|----------------------|--------------------------|
| Ambient temperature: | -55°C~+250°C             |
| Endurance:           | >5000 cycles             |
| Insulator:           | PEEK                     |
| Connector contacts:  | Brass with gold plated   |
| Coupling nut/screw:  | Brass with nickel plated |

|                            |                            |
|----------------------------|----------------------------|
| Housing:                   | Brass with Cr plated       |
| Insulation resistance:     | ≥100MΩ                     |
| IP rating:                 | IP 50                      |
| Shielding efficiency:      | at 10MHz>75dB/at 1GHz>40dB |
| Salt spray corrosion test: | >144h                      |

| Size | Dimensions(mm) |         |     |       |      |      |      |
|------|----------------|---------|-----|-------|------|------|------|
|      | A              | e       | E   | L Max | M    | S1   | S2   |
| 00   | 8.0            | M7*0.5  | 2.0 | 13.7  | 8.5  | 6.3  | 9.0  |
| 0B   | 10.0           | M9*0.6  | 2.0 | 19.1  | 12.5 | 8.2  | 11.0 |
| 1B   | 14.0           | M12*1.0 | 4.0 | 21.1  | 12.0 | 10.5 | 14.0 |
| 2B   | 18.0           | M15*1.0 | 5.1 | 24.6  | 12.5 | 13.5 | 17.0 |
| 3B   | 22.0           | M18*1.0 | 7.1 | 30.3  | 13.5 | 16.5 | 22.0 |

Panel cut-out (page 164)